



Please sign in on your mobile device:
<https://communitymeeting.ocps.net/>

30% Design Community Meeting

Site 97-E-2

December 7, 2023



Welcome Message

From District 2 School Board Member

Maria Salamanca



Introductions

Facilities Communications

Andy Orrell



Surrounding Context



Site Aerial Map



Site Plan

SITE CONCEPT INFORMATION:

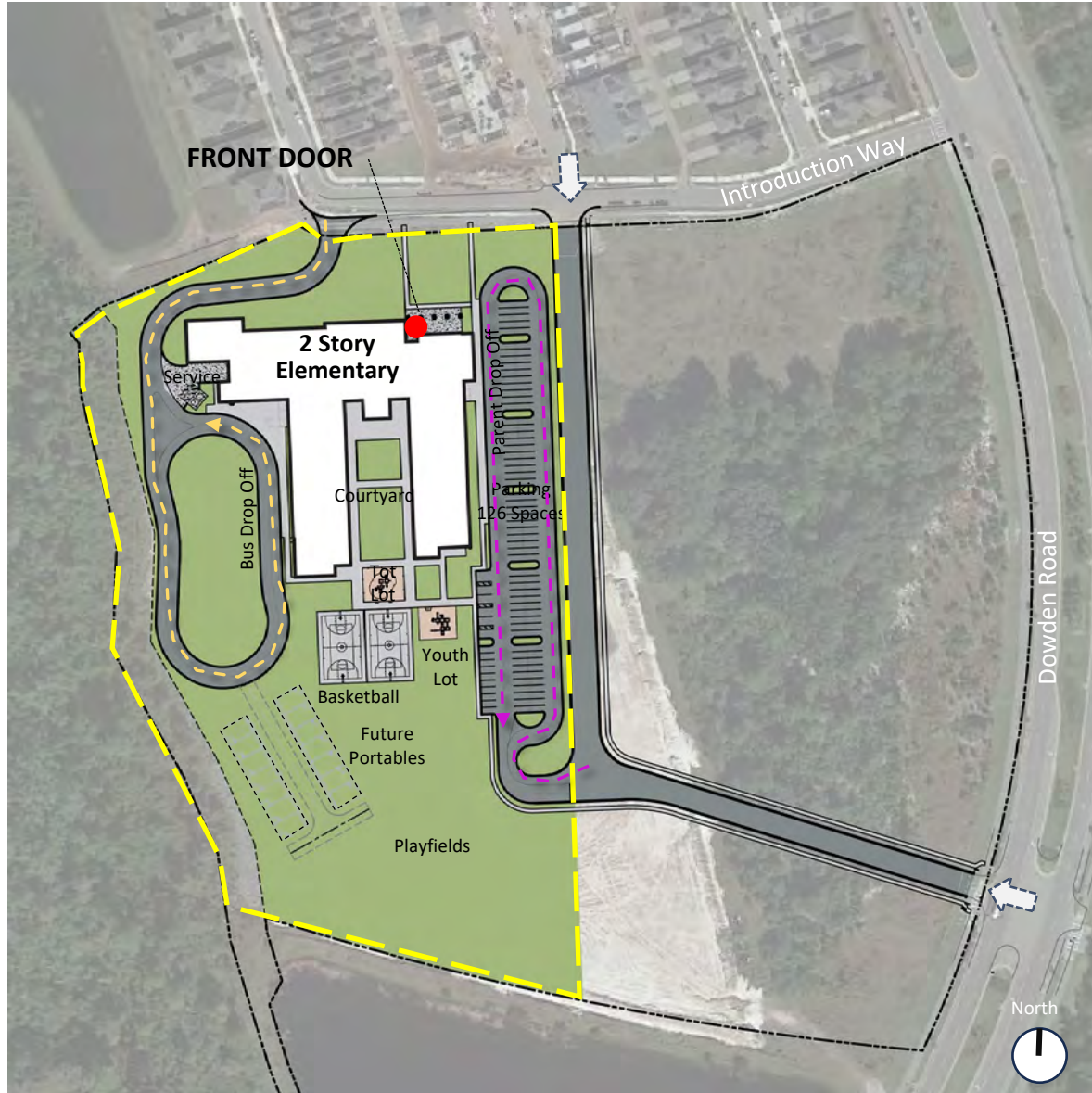
Parking: 126 Spaces


Car Stacking: up to 118 cars

Bus Stacking: 28 buses

Parent Access from North and East

Bus Access from Introduction Way



Car Stacking 

Bus Stacking 

The Stats



Construction Budget: \$38,600,000



837 Student Stations



Site Size: 11 Acres



Opening 2025

Program Elements

The New Elementary School will be designed with...



Classrooms
“Discovery” STEM Lab
Art Room
Music Room
Cafeteria
Innovative Media Center

Advanced Technology
Sustainable Building Systems
Physical Education Amenities
Car & Bus Loops
Single, secure point of entry

...For all new elementaries 2024 AND beyond

Sustainability

Sustainable Design Criteria



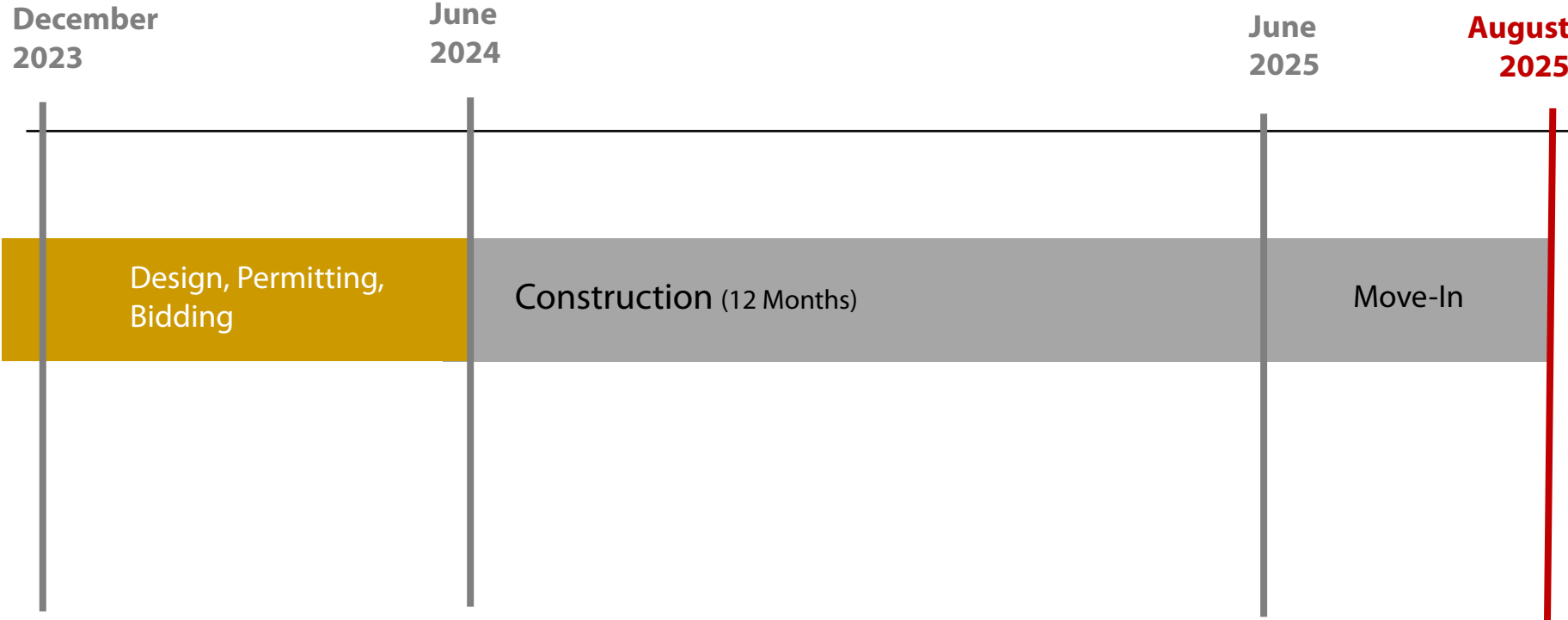
Building

- 10% more energy efficient than ASHRAE 90.1 standard
- High Efficiency Chillers (15% energy reduction)
- Light colored roof to reduce heat gain and improves energy performance
- Energy Efficient LED Lighting
- Energy Star rated equipment
- Water saving toilets, faucets, and fixtures
- All classrooms have daylighting
- Over 75% of ALL spaces have daylighting
- Thermal efficient windows/glazing

Site

- Native/low water plants – reduce water consumption
- Low Impact Design (LID) stormwater design

Schedule



Questions & Answers

This Community Meeting Presentation is posted
at facilities.ocps.net and on the School Board Member's page.

Our Promise. Your Support. Their Success.

Our Promise. Your Support. Their Success.

Our Promise. Your Support. Their Success.

Thank You



**Orange County
Public Schools**